



**Энерго-Моторы**  
Энергетическая компания

**Jenbacher gas engines**  
Technical Specification

**Представитель GE Jenbacher в России**

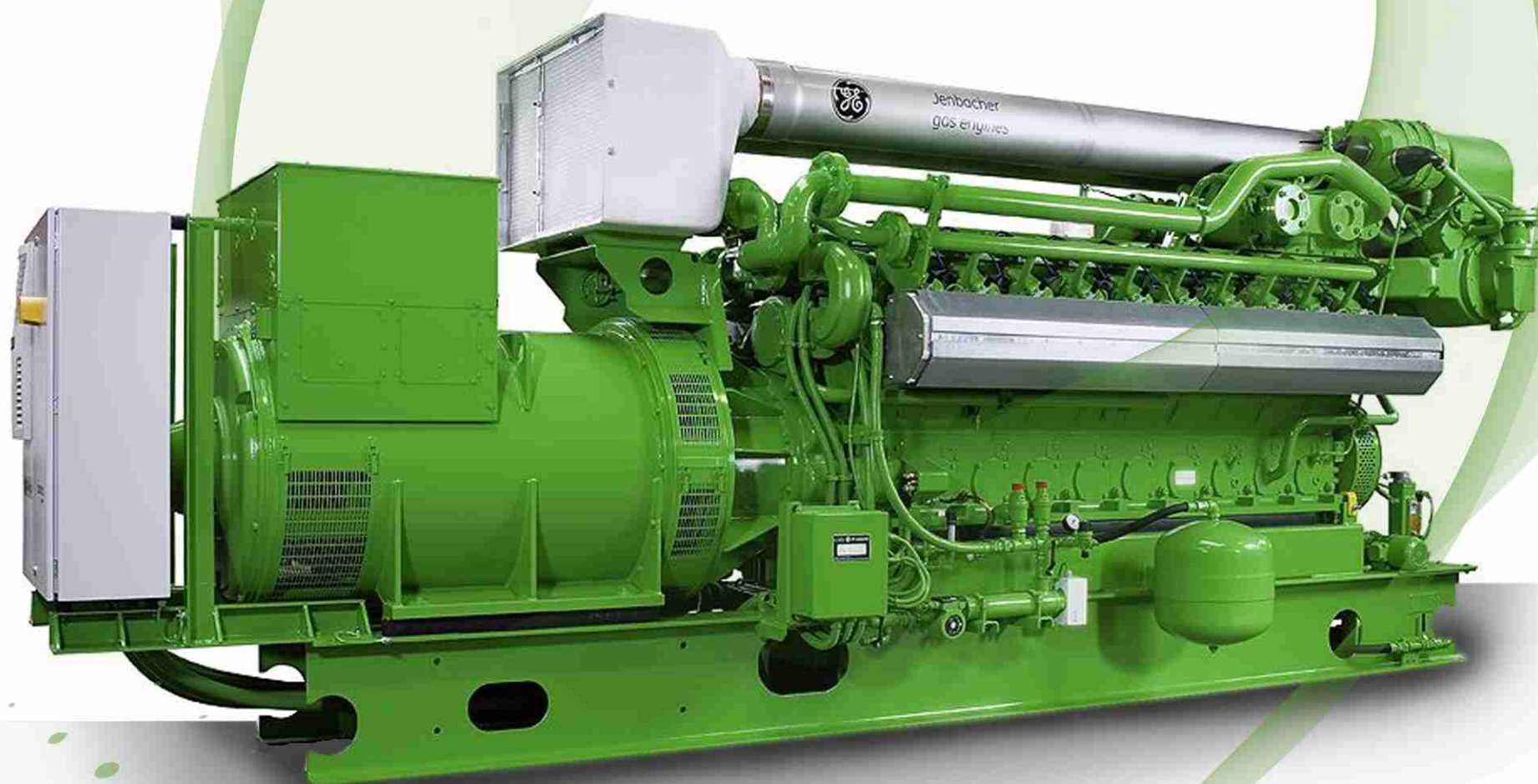
+7 (343) 200-01-74

+7 (343) 286-42-76

8-800-700-54-47 бесплатно по России

[sales@energo-motors.com](mailto:sales@energo-motors.com)

[www.energo-motors.com](http://www.energo-motors.com)



**JMS 320 GS-N.L**

Natural gas 1.063kW el.





**Энерго-Моторы**  
Энергетическая компания

## Jenbacher gas engines Technical Specification

**JMS 320 GS-N.L**  
**Natural gas 1.063kW el.**

### CO-GEN Module data:

Electrical output	kW el.	1.063
Recoverable thermal output (120 °C)	kW	1.190
Energy input	kW	2.607
Fuel Consumption based on a LHV of 9,5 kWh/Nm <sup>3</sup>	Nm <sup>3</sup> /h	274
Electrical efficiency	%	40,8%
Thermal efficiency	%	45,6%
Total efficiency	%	86,4%
Heat to be dissipated (LT-Circuit)	kW	64

Emission values:

NO<sub>x</sub> < 500 mg/Nm<sup>3</sup> (5% O<sub>2</sub>)

### Engine data:

Engine type		J 320 GS-C05
Configuration		V 70°
No. of cylinders		20
Bore	mm	135
Stroke	mm	170
Piston displacement	lit	48,67
Nominal speed	rpm	1.500
Mean piston speed	m/s	8,5
Mean effe. press. at stand. power and nom. sp	bar	18,00
Compression ratio	Epsilon	12,5
ISO standard fuel stop power ICFN	kW	1095
Spec. fuel consumption of engine	kWh/kWh	2,38
Specific lube oil consumption	g/kWh	0,30
Weight dry	kg	5.000
Filling capacity lube oil	lit	370
Based on methane number	MZ	70

### Additional information:

Sound pressure level (engine, average value 1m)	dB(A)	95
Sound pressure level exhaust gas (1m, 30° off engine)	dB(A)	121
Exhaust gas mass flow rate, wet	kg/h	5.680
Exhaust gas volume, wet	Nm <sup>3</sup> /h	4.491
Max.admissible exhaust back pressure after engine	mbar	60
Exhaust gas temperature at full load	°C [8]	427
Combustion air mass flow rate	kg/h	5.493
Combustion air volume	Nm <sup>3</sup> /h	4.249
Max. inlet cooling water temp. (intercooler)	°C	40
Max. pressure drop in front of intake-air filter	mbar	10
Return temperature	°C	70
Forward temperature	°C	90
Hot water flow rate	m <sup>3</sup> /h	51,1

### Alternator:

Manufacturer		STAMFORD
Type		PE 734 C2
Type rating	kVA	1.550
Efficiency at p.f. = 1,0	%	97,1%
Efficiency at p.f. = 0,8	%	96,0%
Ratings at p.f. = 1,0	kW	1.063
Ratings at p.f. = 0,8	kW	1.051
Frequency	Hz	50
Voltage	V	400
Protection Class		IP 23
Insulation class		H
Speed	rpm	1.500
Mass	kg	2.967

### Technical parameters:

Applicable standards:

Based on DIN-ISO 3046

Based on VDE 0530 REM with specified tolerance

Standard conditions:

Air pressure: 1000 mbar or 100 m above sea level

Air temperature: 25°C or 298 K

Relative Humidity: 30%

Engine output derating:

for plants installed at > 500m above sea level and/or intake temperature > 30°C, the reduction of engine power is determined for each project.

Gas quality:

according to TA 1000-0300

Gas flow pressure: 80 - 200 mbar

(Lower gas pressures upon inquiry)

Max. variation in gas pressure: ±10%

+7 (343) 200-01-74

8-800-700-54-47 бесплатно по России

[www.energo-motors.com](http://www.energo-motors.com)





**Энерго-Моторы**  
Энергетическая компания

## Jenbacher gas engines Technical Specification

### >>> Scope of supply genset - JGS 320 GS-N.L

#### Basic engine equipment:

- \*Exhaust gas turbocharger, Intercooler
- \*Motorized carburator for LEANOX control
- \*Electronic contactless high performance ignition system
- \*Lubricating oil pump (gear driven)
- \*Lubricating oil filters in main circuit
- \*Lubricating oil sump; Lubricating oil heat exchanger
- \*Jacket water pump
- \*Fuel-, lubricating oil and jacket water pipe work on engine
- \*Flywheel for alternator operation; Exhaust gas manifold
- \*Viscous damper
- \*Knock sensors

#### Engine accessories:

- \*Electric starter motor
- \*Electronic speed governor
- \*Electronic speed monitoring device including starting and overspeed control
- \*Transducers and switches for oil pressure, jacket water temp., jacket water pressure, charge pressure and mixture temperature
- \*One thermocouple per cylinder

#### Supplied loose:

Gas train according to DIN-DVGW consisting of:

- \*Manual stop valve, fuel gas filter, two solenoid valves, Leakage control device, gas pressure regulator

#### Documentation:

- \*Operating and maintenance manual
- \*Spare parts manual
- \*Drawings

Assembly, painting, testing in Jenbach/Austria

### >>> Scope of supply module - JMS 320 GS-N.L

Identical to Genset except that heat recovery is included.

- \*jacket water heat exchanger mounted on module frame
- \*exhaust gas heat exchanger mounted as separate heat recovery module
- \*all heat exchangers with complete pipework
- \*Heat exchangers and all inherent auxiliaries

### >>> Scope of supply container - JG(M)C 320 GS-N.L

- \*Identical to module/genset but installed in 40' ISO container (65 dB(A) @ 10m); complete with all pipework and fittings
- \*Twin circuit radiation cooler for dissipation of intercooler jacket water and lube oil thermal output; ventilation equipment
- \*Gas & smoke detectors; exhaust silencer; lube oil equipment; starting system; flexible connections
- \*Seperate control room complete with generator switchgear and all internal power and monitoring cables

#### Module equipment:

- \*Base frame for gas engine, alternator and heat exchangers
- \*Internal pole alternator with excitation alternator and with automatic voltage regulator; p.f. 0,8 lagging to 1,0
- \*Flexible coupling, bell housing
- \*Anti-vibration mounts
- \*Air filter
- \*Automatic lube oil replenishing with level control
- \*Wiring of components to module interface panel
- \*Crankcase breather
- \*Jacket water electric preheating

#### Module control panel:

- \*Totally enclosed, single door cubicle, wired to terminals and ready to operate, protection IP 41 outside, IP 10 inside, according to VDE-standards

#### Control equipment:

- \*Engine-Management-System dia.ne (Dialog Network)
  - \*\*Visualisation (industry PC-10" color graphics display): Operation data, controller display, Exh. gas temp., Generator electr. connection, etc.
  - \*\*Central engine- and module control: Speed-, Power output-, LEANOX-Control and knock control, etc.
- \*Multi-transducer
- \*Lockable operation mode selector switch  
Positions: "OFF", "MANUAL", "AUTOMATIC"
- \*Demand switch

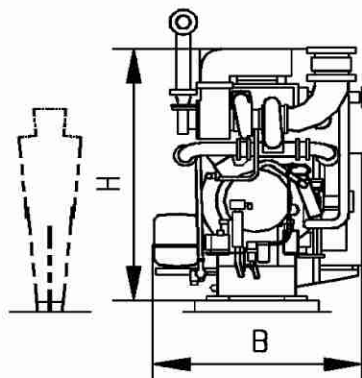
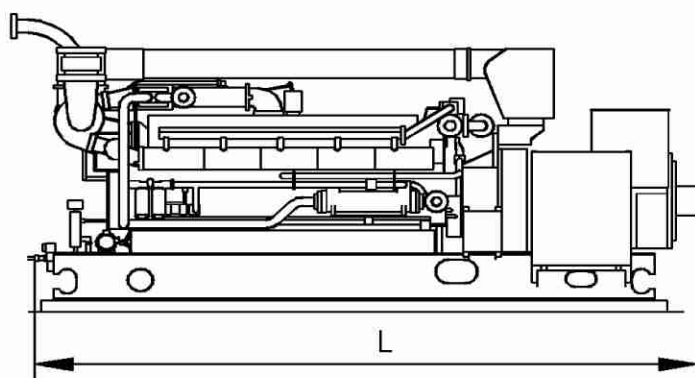


**Энерго-Моторы**  
Энергетическая компания

# Jenbacher gas engines

## Technical Specification

### Genset



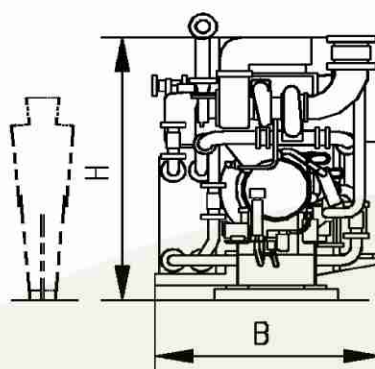
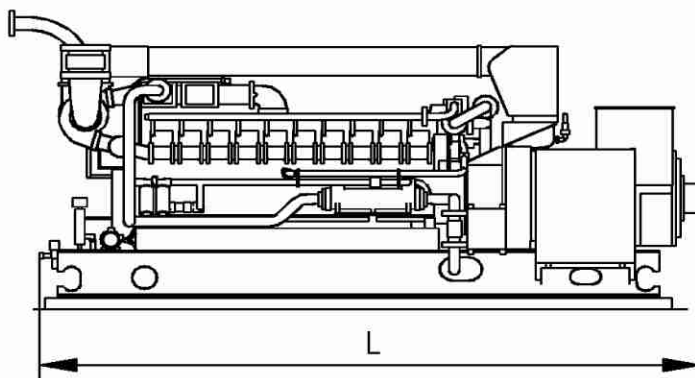
#### Main dimensions and weights (approximate value)

Length L	mm	5.700
Width B	mm	1.700
Height H	mm	2.300
Weight empty	kg	10.500
Weight filled	kg	11.000

#### Connections (at genset)

Jacket water inlet and outlet	DN/PN	80/10
Exhaust gas outlet	DN/PN	250/10
Fuel gas (at gas train)	DN/PN	80/16
Intercooler water connection:		
Low Temperature Circuit	DN/PN	65/10

### Module



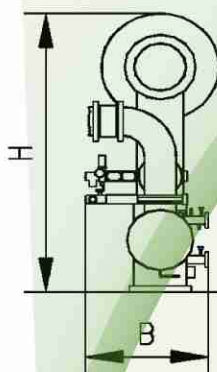
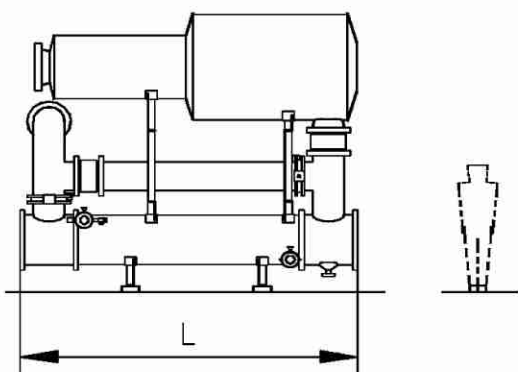
#### Main dimensions and weights (approximate value)

Length L	mm	5.700
Width B	mm	1.900
Height H	mm	2.300
Weight empty	kg	11.000
Weight filled	kg	11.500

#### Connections (at module)

Hot water inlet and outlet	DN/PN	80/10
Exhaust gas outlet	DN/PN	250/10
Fuel gas (at gas train)	DN/PN	80/16
Intercooler water connection:		
Intercooler water-Inlet/Outlet 2nd stage	DN/PN	65/10

### Heat recovery module



#### Main dimensions and weights (approximate value)

Width B	mm	1.800
Height H	mm	3.750
Length L	mm	4.700

#### Connections (on heat recovery module)

Hot water inlet and outlet	DN/PN	80/10
Exhaust gas outlet	DN/PN	250/10
Condensate drain	DN/PN	50/10
Drain line	1/2"	1/2"

+7 (343) 200-01-74  
8-800-700-54-47 бесплатно по России  
[www.energo-motors.com](http://www.energo-motors.com)