



Энерго-Моторы
Энергетическая компания

Jenbacher gas engines
Technical Specification

Представитель GE Jenbacher в России

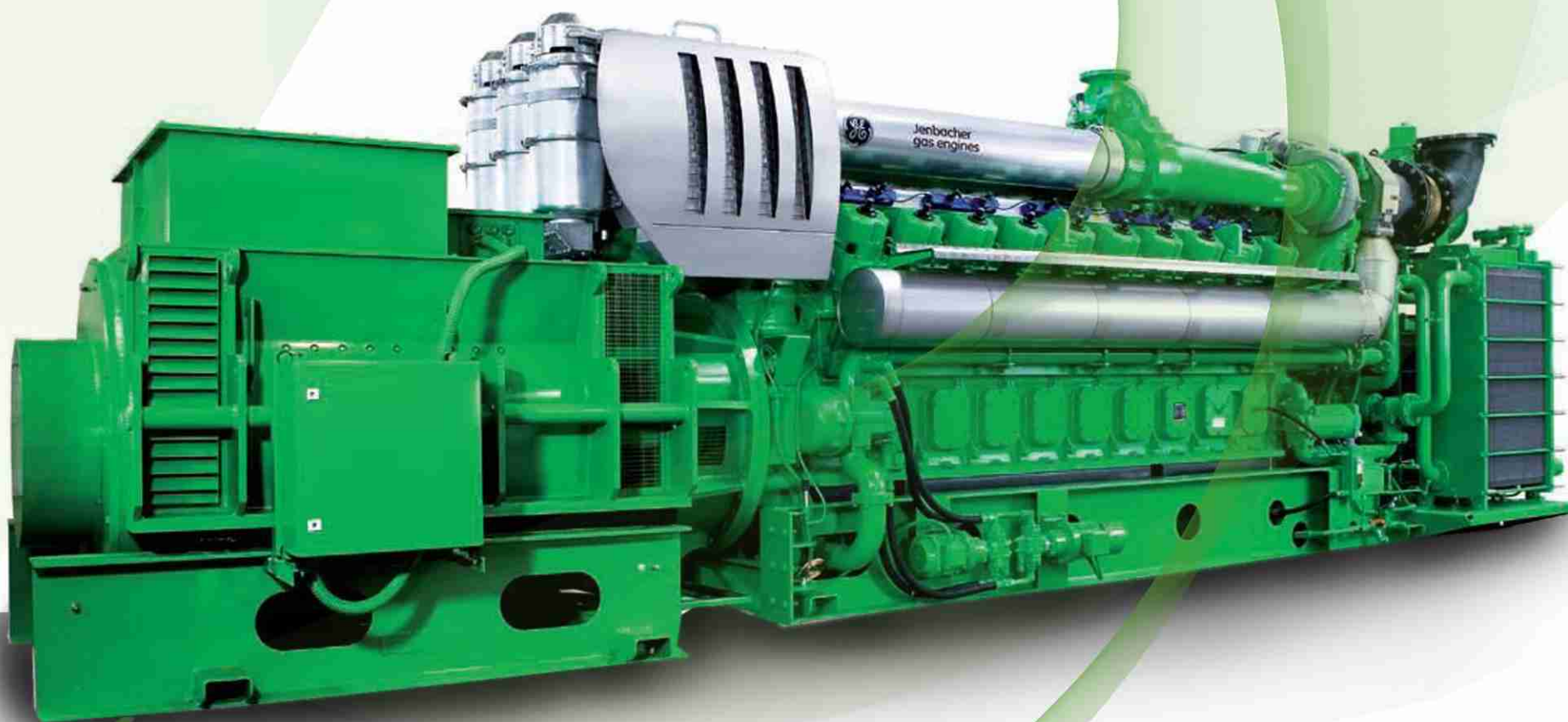
+7 (343) 200-01-74

+7 (343) 286-42-76

8-800-700-54-47 бесплатно по России

sales@energo-motors.com

www.energo-motors.com



JMS 620 GS-N.L

Natural gas 3.354kW el.



Энерго-Моторы
Энергетическая компания

Jenbacher gas engines

Technical Specification

JMS 620 GS-N.L

Natural gas 3.354kW el.

CO-GEN Module data:

Electrical output	kW el.	3.354
Recoverable thermal output (120 °C)	kW	3.102
Energy input	kW	7.462
Fuel Consumption based on a LHV of 9,5 kWh/Nm ³	Nm ³ /h	785
Electrical efficiency	%	45,0%
Thermal efficiency	%	41,6%
Total efficiency	%	86,5%
Heat to be dissipated (LT-Circuit)	kW	169
Emission values:		
NOx < 500 mg/Nm ³ (5% O ₂)		

Engine data:

Engine type		J 620 GS-F01
Configuration		V 60°
No. of cylinders		20
Bore	mm	190
Stroke	mm	220
Piston displacement	lit	124,75
Nominal speed	rpm	1.500
Mean piston speed	m/s	11
Mean effe. press. at stand. power and nom. speed	bar	22,00
Compression ratio	Epsilon	12,0
ISO standard fuel stop power ICFN	kW	3431
Spec. fuel consumption of engine	kWh/kWh	2,17
Specific lube oil consumption	g/kWh	0,30
Weight dry	kg	12.000
Filling capacity lube oil	lit	670
Based on methane number Min. methane number	MZ	94 80

Additional information:

Sound pressure level (engine, average value 1m)	dB(A)	101
Sound pressure level exhaust gas (1m, 30° off engine)	dB(A)	123
Exhaust gas mass flow rate, wet	kg/h	18.221
Exhaust gas volume, wet	Nm ³ /h	14.373
Max.admissible exhaust back pressure after engine	mbar	60
Exhaust gas temperature at full load	°C [8]	383
Combustion air mass flow rate	kg/h	17.684
Combustion air volume	Nm ³ /h	13.680
Max. inlet cooling water temp. (intercooler)	°C	40
Max. pressure drop in front of intake-air filter	mbar	10
Return temperature	°C	70
Forward temperature	°C	90
Hot water flow rate	m ³ /h	133,2

Alternator:

Manufacturer		AVK e)
Type		DIG 142 e/4 e)
Type rating	kVA	4.450
Efficiency at p.f. = 1,0	%	97,8%
Efficiency at p.f. = 0,8	%	97,2%
Ratings at p.f. = 1,0	kW	3.354
Ratings at p.f. = 0,8	kW	3.336
Frequency	Hz	50
Voltage	kV	6,3
Protection Class		IP 23
Insulation class		F
Speed	rpm	1.500
Mass	kg	10.250

Technical parameters:

Applicable standards:

Based on DIN-ISO 3046

Based on VDE 0530 REM with specified tolerance

Standard conditions:

Air pressure: 1000 mbar or 100 m above sea level

Air temperature: 25 °C or 298 K

Relative Humidity: 30%

Engine output derating:

for plants installed at > 500m above sea level and/or intake temperature > 30 °C, the reduction of engine power is determined for each project.

Gas quality:

according to TA 1000-0300

Gas flow pressure: 120 - 200 mbar

(Lower gas pressures upon inquiry)

Prechamber gas pressure: 3,5-4,0 bar

Max. variation in gas pressure: ±10%

+7 (343) 200-01-74
8-800-700-54-47 бесплатно по России
www.energo-motors.com



Энерго-Моторы
Энергетическая компания

Jenbacher gas engines Technical Specification

>>> Scope of supply genset - JGS 620 GS-N.L

Basic engine equipment:

- *Exhaust gas turbocharger, Intercooler
- *Motorized carburator for LEANOX control
- *Electronic contactless high performance ignition system
- *Lubricating oil pump (gear driven)
- *Lubricating oil filters in main circuit
- *Lubricating oil sump; Lubricating oil heat exchanger
- *Jacket water pump
- *Fuel-, lubricating oil and jacket water pipe work on engine
- *Flywheel for alternator operation; Exhaust gas manifold
- *Viscous damper
- *Knock sensors

Engine accessories:

- *Electric starter motor
- *Electronic speed governor
- *Electronic speed monitoring device including starting and overspeed control
- *Transducers and switches for oil pressure, jacket water temp., jacket water pressure, charge pressure and mixture temperature
- *One thermocouple per cylinder

Supplied loose:

Gas train according to DIN-DVGW consisting of:

- *Manual stop valve, fuel gas filter, two solenoid valves, Leakage control device, gas pressure regulator

Prechamber Gas Train

Documentation:

- *Operating and maintenance manual
- *Spare parts manual
- *Drawings

Assembly, painting, testing in Jenbach/Austria

>>> Scope of supply module - JMS 620 GS-N.L

Identical to Genset except that heat recovery is included.

- *jacket water heat exchanger mounted on module frame
- *exhaust gas heat exchanger delivered loose
- *all heat exchangers with complete pipework
- *Heat exchangers and all inherent auxiliaries

Module equipment:

- *Base frame for gas engine, alternator and heat exchangers
- *Internal pole alternator with excitation alternator and with automatic voltage regulator; p.f. 0,8 lagging to 1,0
- *Flexible coupling, bell housing
- *Anti-vibration mounts
- *Air filter
- *Automatic lube oil replenishing with level control
- *Wiring of components to module interface panel
- *Crankcase breather
- *Jacket water electric preheating

Module control panel:

- *Totally enclosed, single door cubicle, wired to terminals and ready to operate, protection IP 41 outside, IP 10 inside, according to VDE-standards

Control equipment:

- *Engine-Management-System dia.ne (Dialog Network)
 - **Visualisation (industry PC-10" color graphics display): Operation data, controller display, Exh. gas temp., Generator electr. connection, etc.
 - **Central engine- and module control: Speed-, Power output-, LEANOX-Control and knock control, etc.
- *Multi-transducer
- *Lockable operation mode selector switch
Positions: "OFF", "MANUAL", "AUTOMATIC"
- *Demand switch

+7 (343) 200-01-74

8-800-700-54-47 бесплатно по России

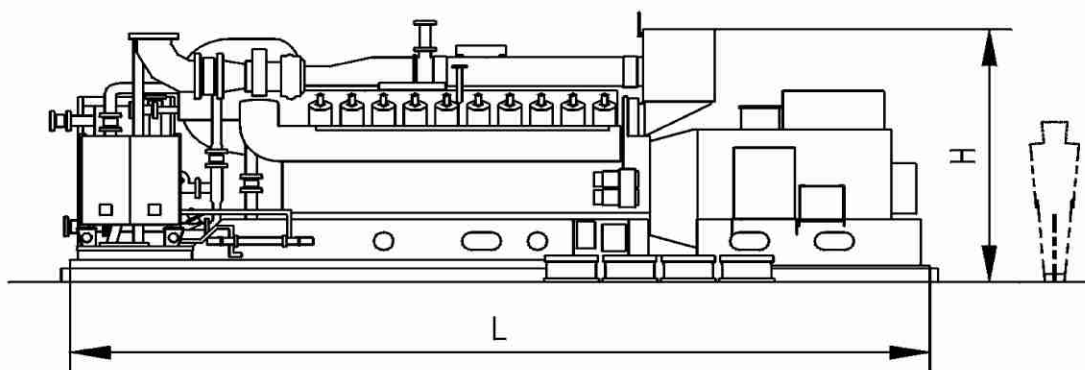
www.energo-motors.com



Энерго-Моторы
Энергетическая компания

Jenbacher gas engines Technical Specification

Genset



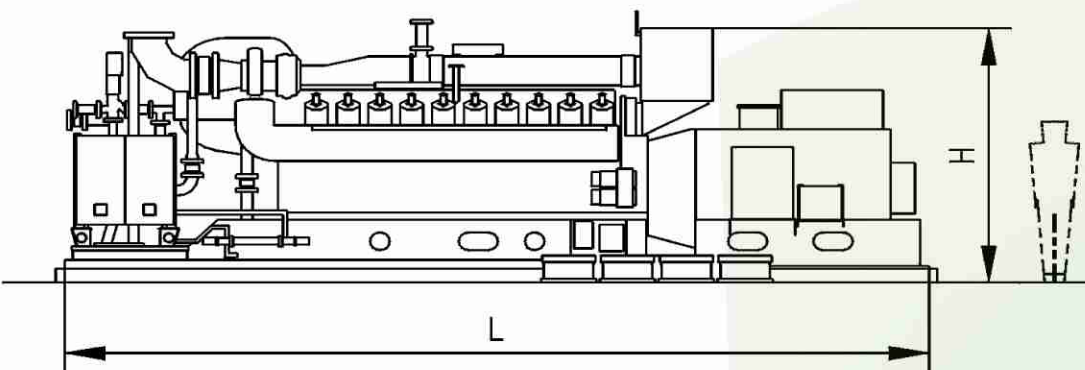
Main dimensions and weights (approximate value)

Length L	mm	8.900
Width B	mm	2.200
Height H	mm	2.800
Weight empty	kg	29.700
Weight filled	kg	30.700

Connections (at genset)

Jacket water inlet and outlet	DN/PN	100/10
Exhaust gas outlet	DN/PN	600/10
Fuel gas (at gas train)	DN/PN	100/16
Intercooler water connection:		
Low Temperature Circuit	DN/PN	65/10

Module



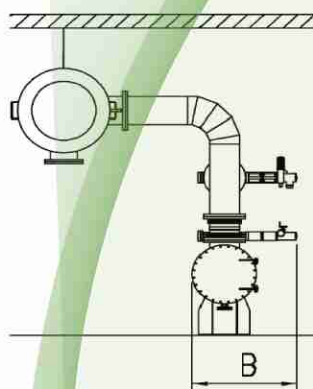
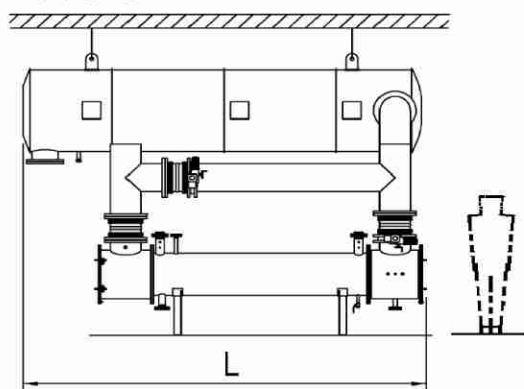
Main dimensions and weights (approximate value)

Length L	mm	8.900
Width B	mm	2.200
Height H	mm	2.800
Weight empty	kg	30.300
Weight filled	kg	31.300

Connections (at module)

Hot water inlet and outlet	DN/PN	100/10
Exhaust gas outlet	DN/PN	600/10
Fuel gas (at gas train)	DN/PN	100/16
Intercooler water connection:		
Intercooler water-Inlet/Outlet 2nd stage	DN/PN	65/10

Heat recovery module



Main dimensions and weights (approximate value)

Width B	mm	> 1962
Height H	mm	> 5800
Length L	mm	> 6750

Connections (on heat recovery module)

Hot water inlet and outlet	DN/PN	100/10
Exhaust gas outlet	DN/PN	600/10
Condensate drain	DN/PN	50/10
Drain line	1/2"	1/2"

+7 (343) 200-01-74
8-800-700-54-47 бесплатно по России
www.energo-motors.com