

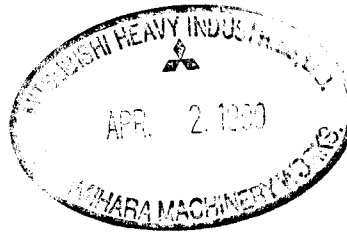
**FOR REFERENCE
ONLY**

SPECIFICATIONS

MITSUBISHI HIGH SPEED DIESEL ENGINE
MODEL MITSUBISHI L2E-61SDH

(GENERATOR)

APPLICATION
OR APPROVAL



DATE Mar.19.1999

MITSUBISHI HEAVY INDUSTRIES, LTD.

1	営OEM
1	E保
1	小E作
4	MEE
1	控
8	計

CHG	DATE	APPROVED	CHECKED	DRAWN
		<i>T. Yamamoto</i>	<i>A. Samata</i>	R.Touge

1. Principal Particulars of Diesel Engine

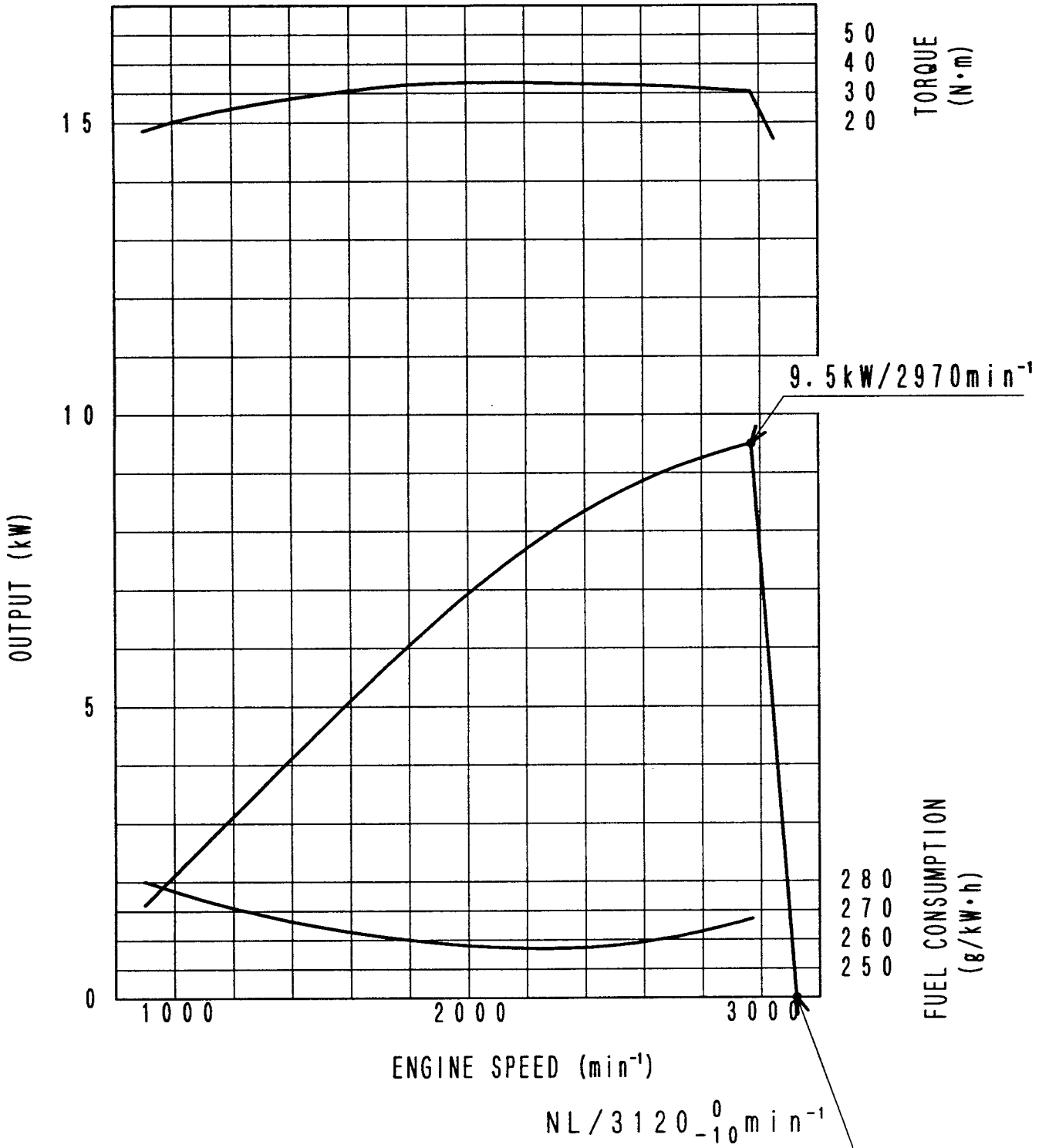
Standard	All items, unless otherwise specified, are in accordance with JIS and maker's standards
Model	Mitsubishi L2E-61SDH (MHI No. 30L00-02080)
Type	4 cycle water-cooled, vertical overhead valve, cylinder in line, swirl chamber type
Number of cylinders	2
Bore × Stroke	76mm × 70mm
Piston displacement	0.635 liters
Compression ratio	23:1
Rotation	Anti-Clockwise rotation as viewed from flywheel side.
Firing order	1-2
Engine weight(Dry)	Approx. 61kg
Inclination(Continuous)	25°
(Temporary)	30° (Max 30 min.)
Performance	Refer to the attached performance curve
Injection timing	17° BTDC
Fuel	ASTM diesel fuel oil No.2-D(JIS K2204 gas oil specification No.2 or 3)
Lubricating oil	API classification service CD class
Fuel injection pump	BOSCH type
Fuel injection nozzle	Throttle type
Governor	Mechanical centrifugal type
Lubricating system	Forced circulation by gear pump

Oil capacity	Approx. 2.4 liters
Cooling system	Forced circulation by centrifugal pump
Engine water capacity	Apporx. 1.2 liters
Alternator	12V - 480W
Starting system	12V - 1.6kW
Voltage regulator	IC type (Built in alternator)
Glow plug	12V Sheathed type (Quick heat up type)
Engine shut off system	Electric solenoid (ETR)

2. Accessories (Loose Supply)

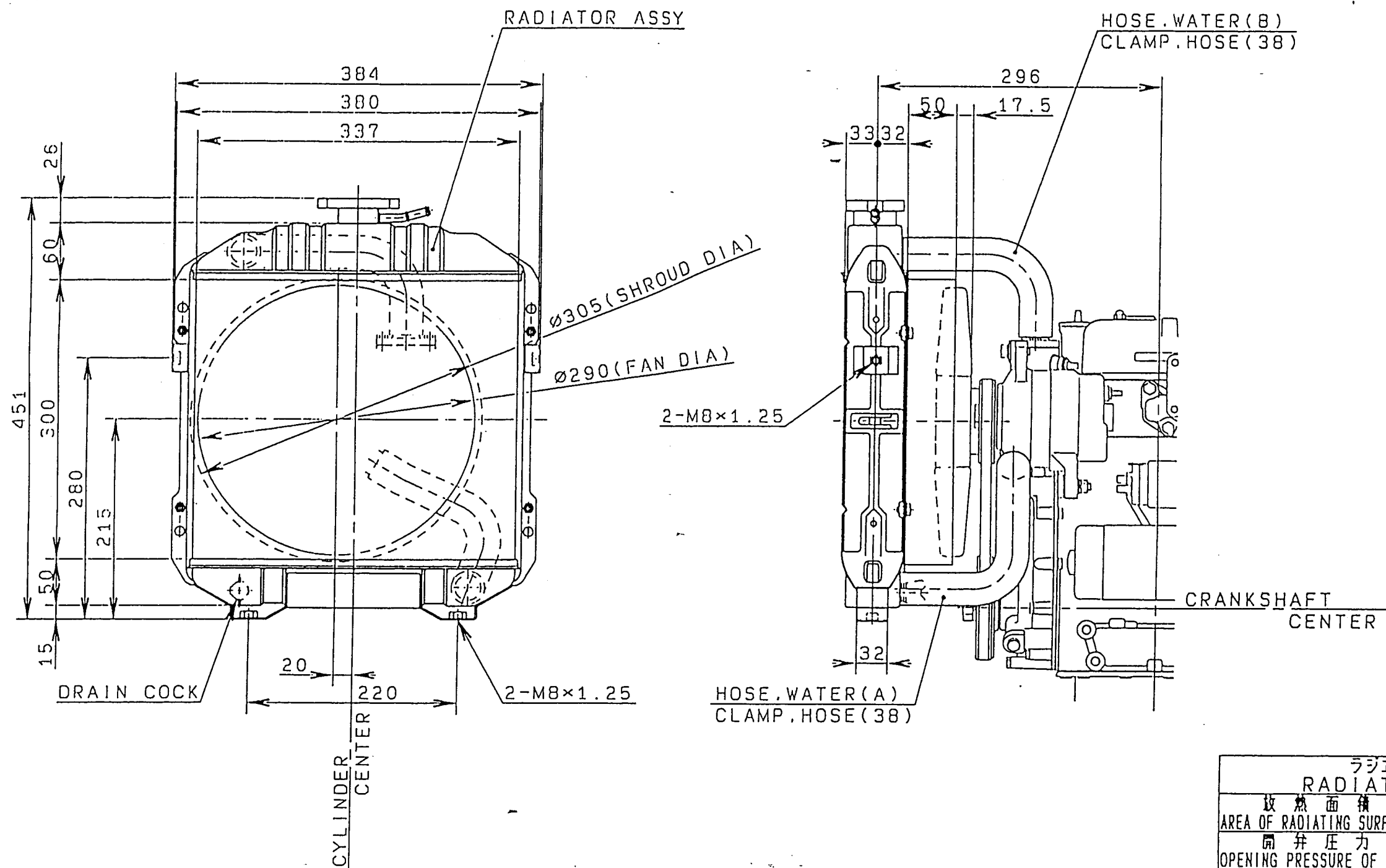
	Parts Name	Parts No.	Q' ty	Remarks	
1	O-RING	F3150-03600	1		
2	NUT(6)	MF430-004	1		
3	BOLT(6×20)	MF101-229	1		
4	GASKET, EXHAUST	MM408-580	1	TSDST-4497A	A4
5	RADIATOR ASSY	MM130-526	1	TDSL2-495	A3
6	HOSE, WATER(B)	MM130-578	1	TDSL2-495	
7	HOSE, WATER(A)	MM130-537	1	TDSL2-495	
8	CLAMP, HOSE	MF661-019	4	TDSL2-495	
9	SUPPORT, WATER HOSE	MM434-427	1		
10	SCREW, SUPPORT	MS350-029	1		
11	RESERVOIR TANK	MM315-436	1	TSDS -4701B	A4
12	RESERVOIR TANK BRACKET	MM315-421	1	TDSK0-4171A	A4
13	FUEL PUMP	30A60-00200	1	TDSK4-4488A	A3

MITSUBISHI DIESEL ENGINE
 MODEL L2E-61SDH
 PERFORMANCE CURVE



80/1269/EEC

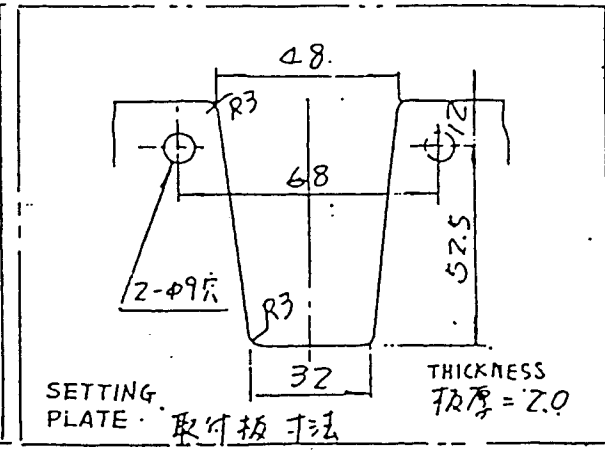
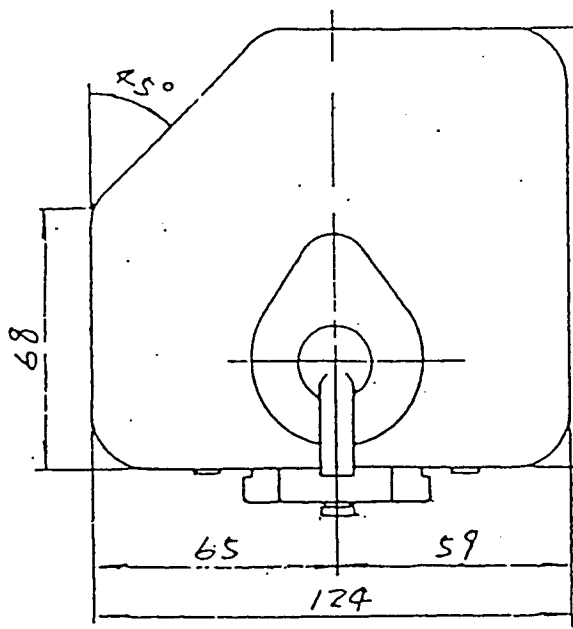
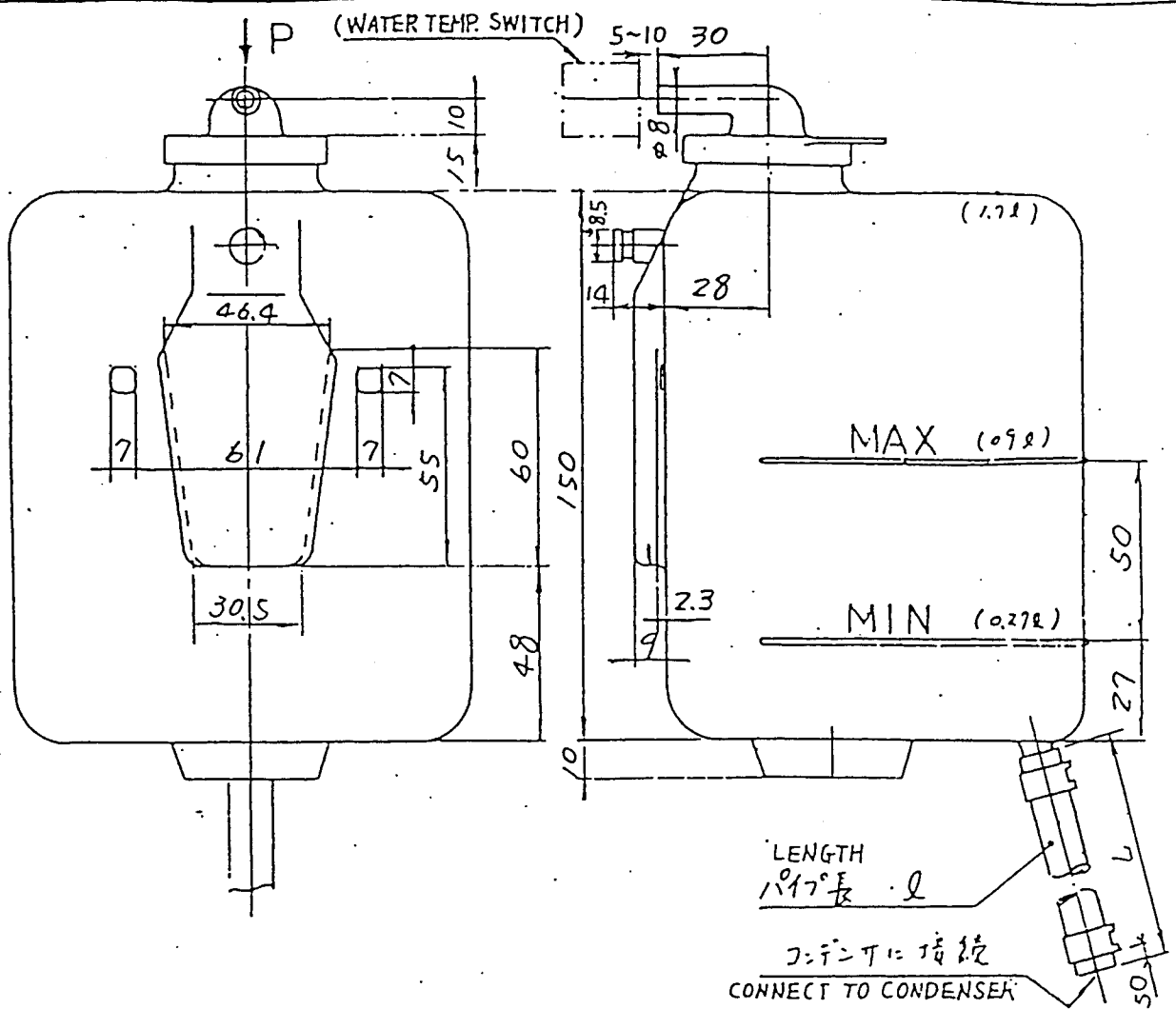
dry atmospheric pressure : 990mbar
 ambient temperature : 25°C



PART NAME	PART NO.	QTY
RADIATOR ASSY	MM130-526	1
HOSE, WATER (UPPER)	MM130-537	1
HOSE, WATER (LOWER)	MM130-578	1
CLAMP, HOSE (38)	MF661-019	4

ラジエータ仕様 RADIATOR SPEC	
放射面積 AREA OF RADIATING SURFACE	4.98m ²
開弁圧力 OPENING PRESSURE OF CAP	0.9kgf/cm ²
乾燥重量 DRY WEIGHT	4.9kgf
水容量 VOLUME OF WATER	1.55 ℓ
放射量 RADIATOR CAPACITY	21500kcal/h
耐振性 ALLOWABLE VIBRATION	MAX.5G

APPR'D. BY	CHECKED BY	DATE	NAME	DWG. NO.
T. Tsubota	T. Yamachi A. Samata	'97. 1.27	M. UEZONO	RADIATOR SYSTEM TD SL2-495



VIEW
視

MATERIAL
材質

POLYPROPYLENE
ポリプロピレン

PARTS No.	HOSE "L" mm	PARTS No.	H.ØSE "L" mm
MM315436	440		
MM317424	600		
MM317426	730		
MM317465	1000		
MM317467	1360		
MM407370	1500		

検×1 承

APPROD BY 得 May-13-80 名

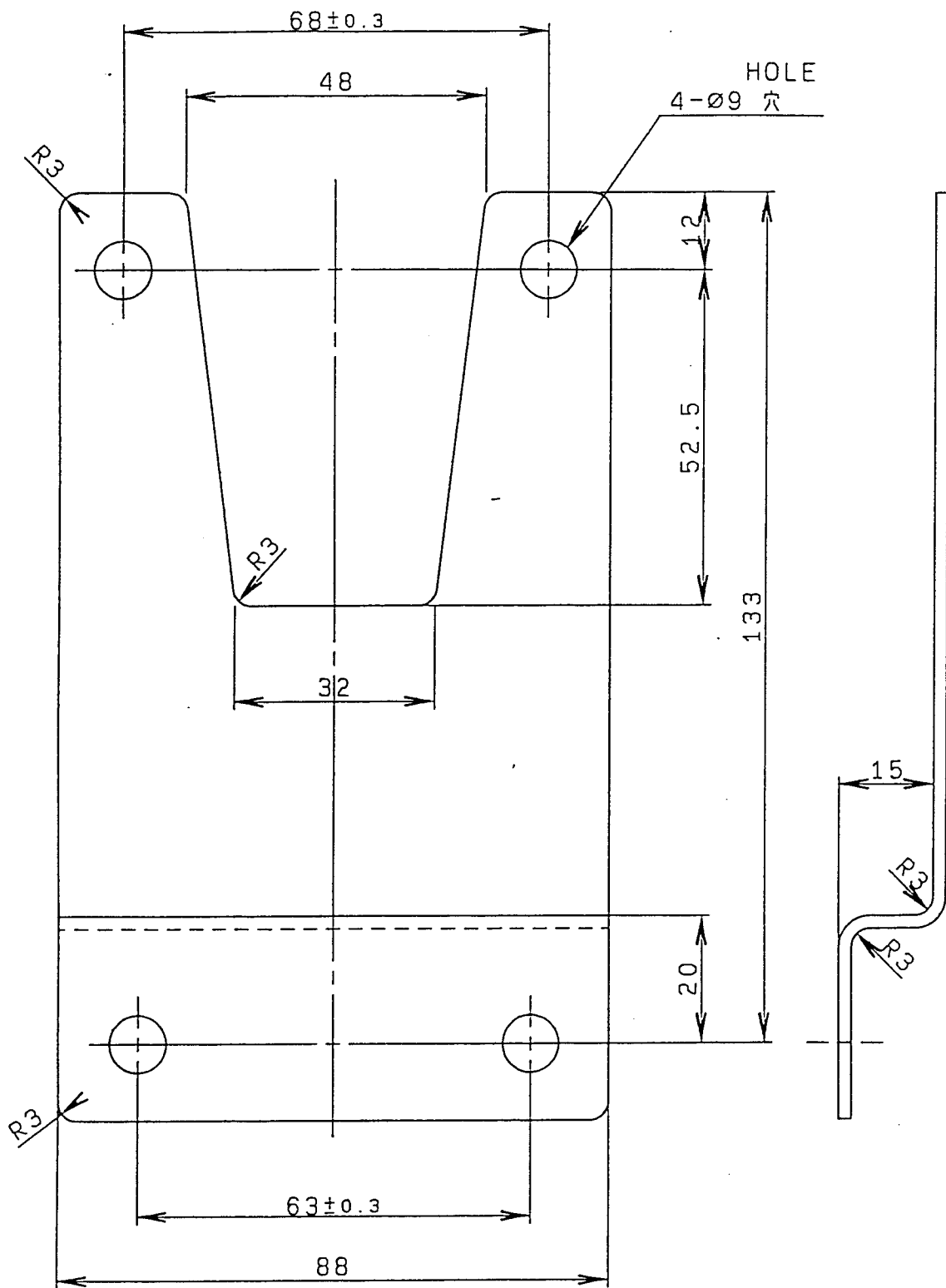
NAME RESERVOIR TANK ASSY

TDSD-4701B

31) 承 f. Sakam

CHECKED BY 47. T. Sakam

DRAWN BY



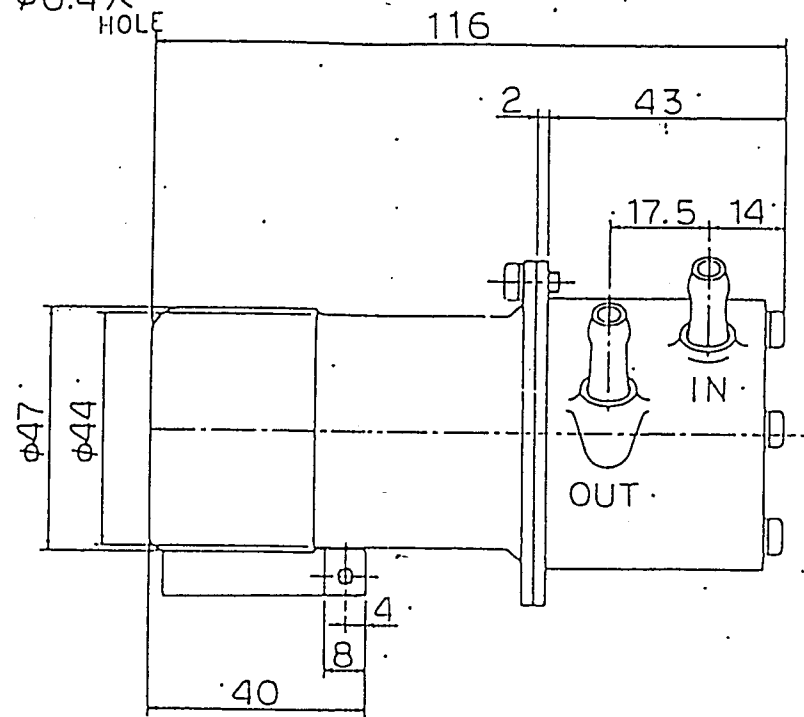
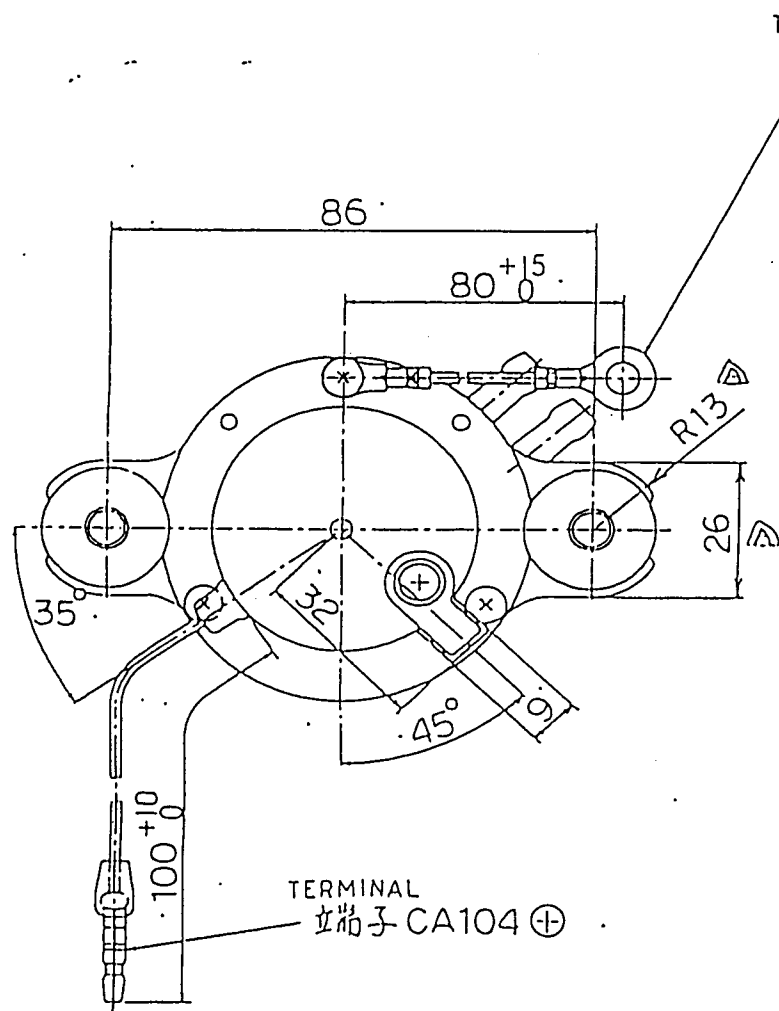
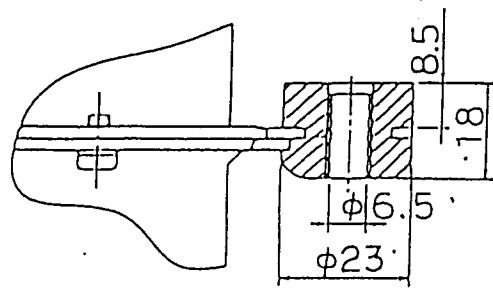
MATERIAL
材料 SPCC t=2.0

部品番号 MM315421

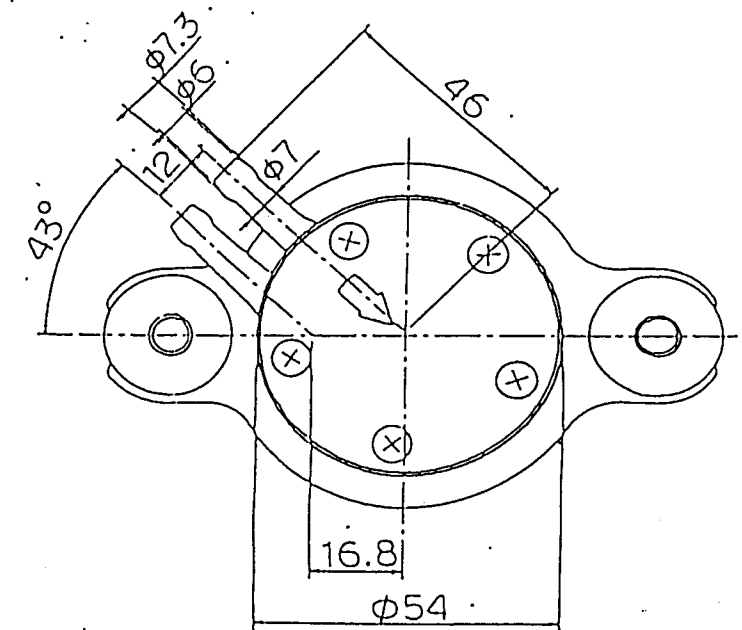
PART NO.

△ 97.4.11. 材料変更

APPR'D. BY	CHECKED BY	DATE	NAME	DWG. NO.
坪田	萩峰 匠	'97. 4. 11	RESERVOIR BRACKET	TD SKO-4171A
		DRAWN BY (MSH)		
		広瀬		



 UPWARD
 取付方向
 SETTING DIRECTION



PART No. 部品番号 30A60-00200
 RATED VOLTAGE 定格電圧 DC12 V
 PUMP DELIVERY 吐出量 300 CC/min 以上
 (WITH φ1.7 NOZZLE) (φ1.7ノズル付時)

MAX. SUCTION PRESS. 最大吸上ヘッド 150mmHg以上(乾き時) MIN. (DRY)
 WORKING TEMPERATURE RANGE 使用温度範囲 -20~70°C
 WEIGHT 重量 550gr
 ALLOWABLE VIBRATION 許容振動加速度 MAX. 4G

APPR'D. BY 持	CHECKED BY 持	DATE 70.6.21	NAME (V)水止木	DWG. NO.
		DRAWN BY 持	FUEL PUMP ASSY.	TDsk4-4488A