

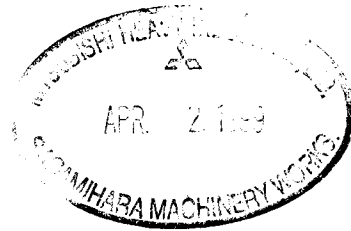
**FOR REFERENCE  
ONLY**

## SPECIFICATIONS

MITSUBISHI HIGH SPEED DIESEL ENGINE  
MODEL MITSUBISHI L3E-61SDH

(GENERATOR)

FOR APPROVAL



DATE Mar.19.1999

MITSUBISHI HEAVY INDUSTRIES, LTD.

1	営OEM
1	E保
1	小E作
4	MEE
1	控
8	計

CHG	DATE	APPROVED	CHECKED	DRAWN
		<i>T. Yamada</i>	<i>A. Samata</i>	Touge

## 1. Principal Particulars of Diesel Engine

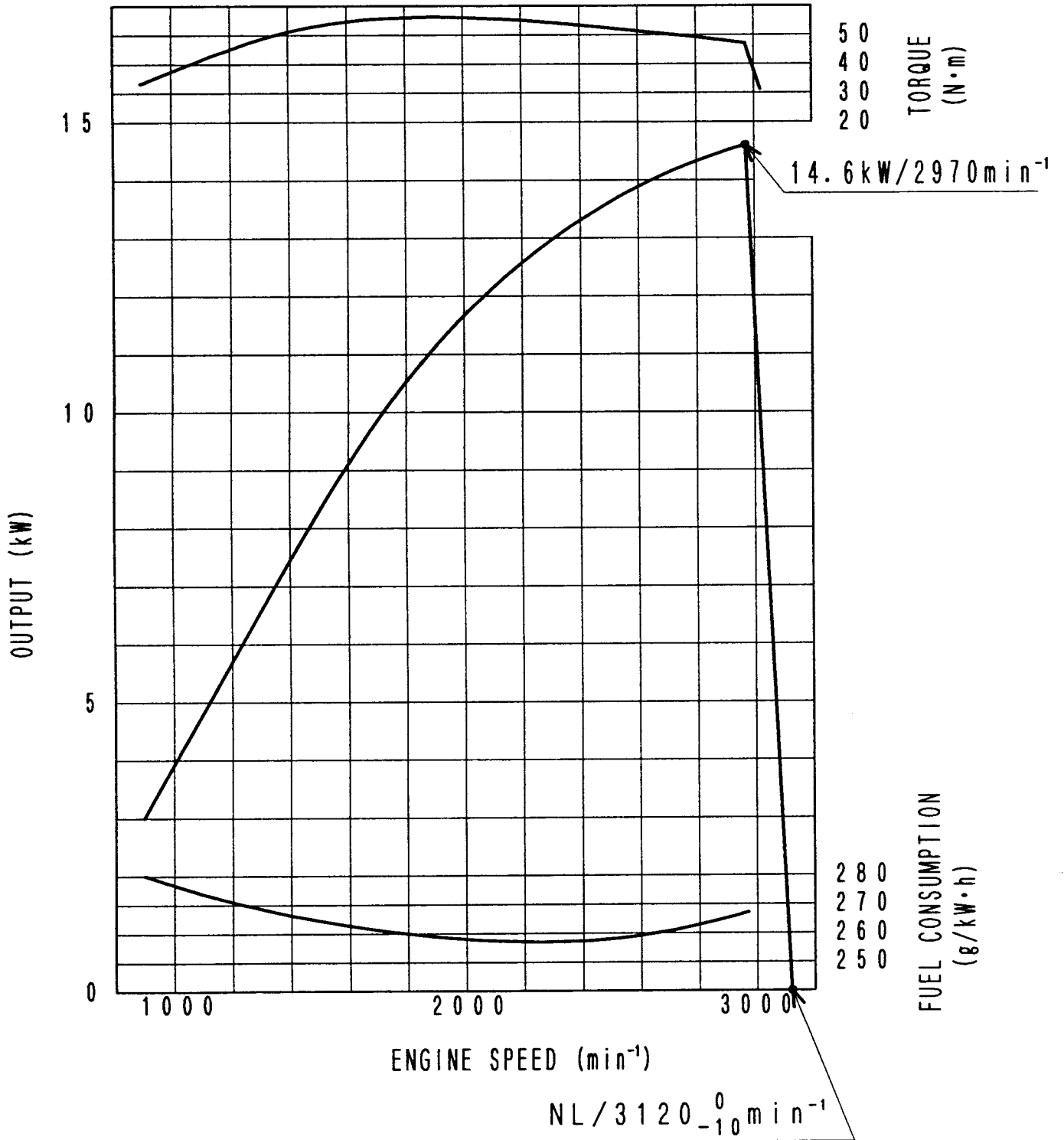
Standard	All items, unless otherwise specified, are in accordance with JIS and maker's standards
Model	Mitsubishi L3E-61SDH (MHI No. 30L00-07060)
Type	4 cycle water-cooled, vertical overhead valve, cylinder in line, swirl chamber type
Number of cylinders	3
Bore × Stroke	76mm × 70mm
Piston displacement	0.952 liters
Compression ratio	23:1
Rotation	Anti-Clockwise rotation as viewed from flywheel side.
Firing order	1-3-2
Engine weight(Dry)	Approx. 75kg
Inclination(Continuous)	25°
(Temporary)	30° (Max 30 min.)
Performance	Refer to the attached performance curve
Injection timing	17° BTDC
Fuel	ASTM diesel fuel oil No.2-D(JIS K2204 gas oil specification No.2 or 3)
Lubricating oil	API classification service CD class
Fuel injection pump	BOSCH type
Fuel injection nozzle	Throttle type
Governor	Mechanical centrifugal type
Lubricating system	Forced circulation by gear pump

Oil capacity	Approx. 3.6 liters
Cooling system	Forced circulation by centrifugal pump
Engine water capacity	Apporx. 1.8 liters
Alternator	12V - 480W
Starting system	12V - 1.6kW
Voltage regulator	IC type (Built in alternator)
Glow plug	12V Sheathed type (Quick heat up type)
Engine shut off system	Electric solenoid (ETR)

## 2. Accessories ( Loose Supply )

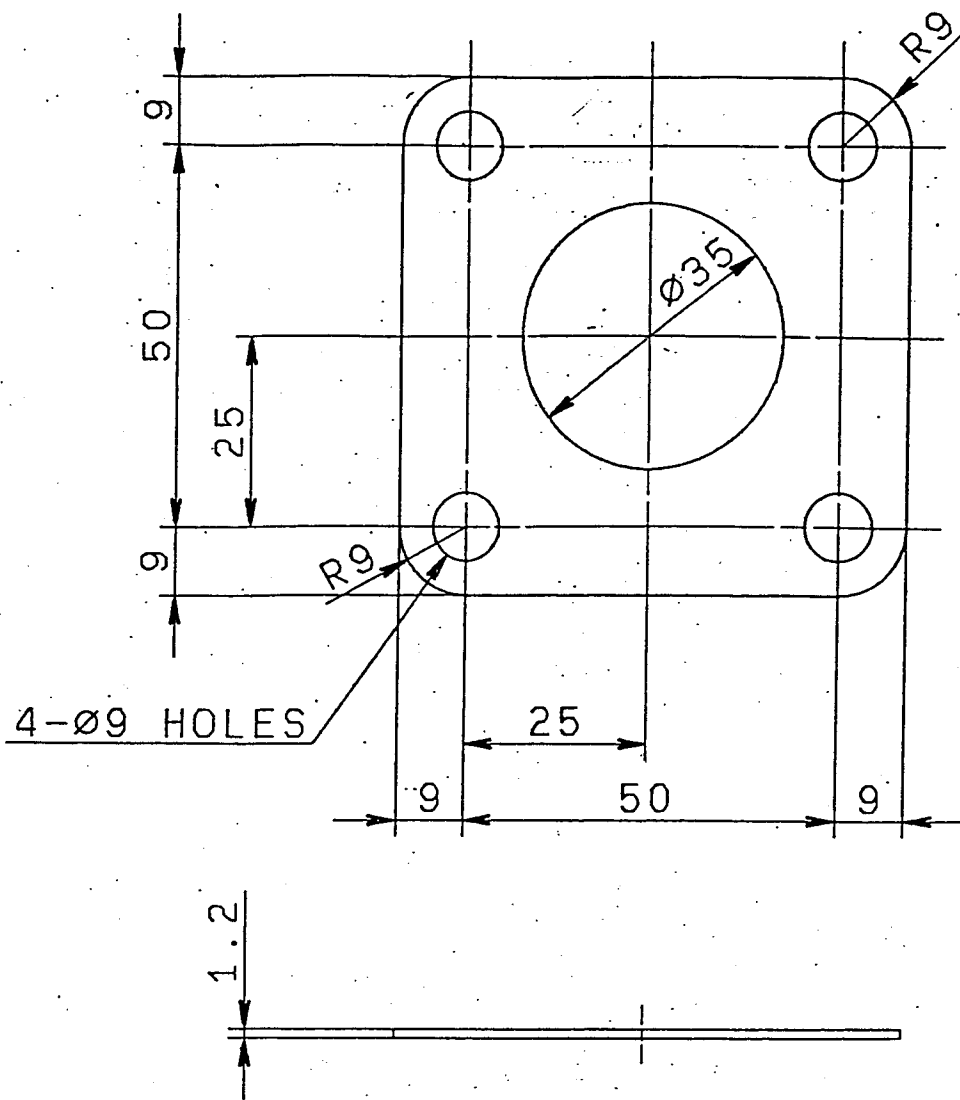
	Parts Name	Parts No.	Q' ty	Remarks	
1	O-RING	F3150-03600	1		
2	NUT(6)	MF430-004	1		
3	BOLT (6×20)	MF101-229	1		
4	GASKET, EXHAUST	MM408-580	1	TSDST-4497A	A4
5	RADIATOR ASSY	MM130-524	1	TDSL0-412D	A3
6	HOSE, WATER(B)	MM130-523	1	TDSL0-412D	
7	HOSE, WATER(A)	MM130-522	1	TDSL0-412D	
8	CLAMP, HOSE	MF661-019	4	TDSL0-412D	
9	SUPPORT, WATER HOSE	MM434-427	1		
10	SCREW, SUPPORT	MS350-029	1		
11	RESERVOIR TANK	MM315-436	1	TSDS -4701B	A4
12	RESERVOIR TANK BRACKET	MM315-421	1	TDSK0-4171A	A4
13	FUEL PUMP	30A60-00200	1	TDSK4-4488A	A3

MITSUBISHI DIESEL ENGINE  
 MODEL L3E-61SDH  
 PERFORMANCE CURVE



80/1269/EEC

dry atmospheric pressure : 990mbar  
 ambient temperature : 25°C

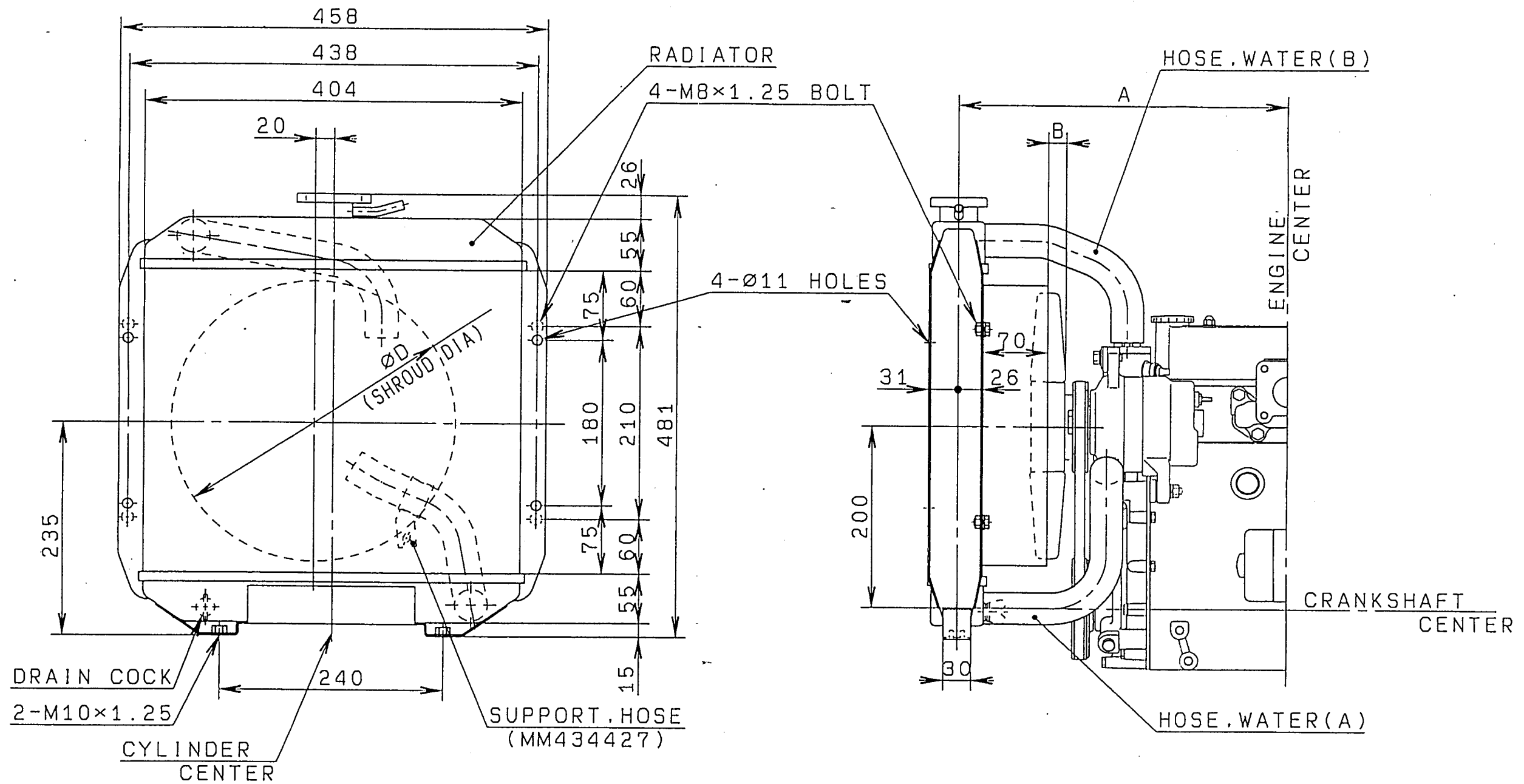


PART NO.	MM408580	30A30-00100
MATERIAL	POWER BESTOS #1955	POWER BESTOS #1955 ENB

SCALE 1/1

APPR'D. BY 	CHECKED BY 	DATE 91.10.23	NAME	DWG. NO.
		DRAWN BY (MSH) MANABE	GASKET, EXHAUST PIPE	TDSDT-4497A

FULL CADAM

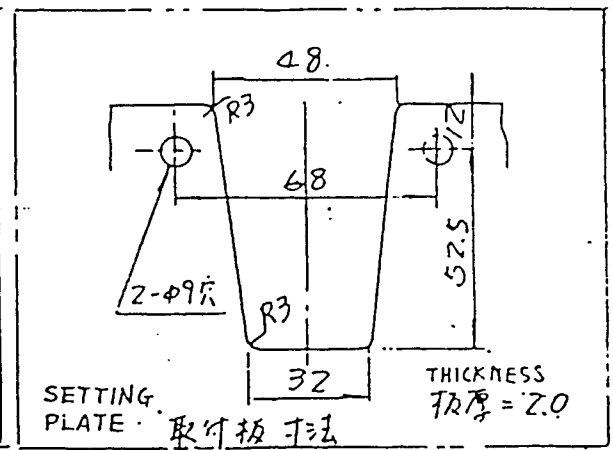
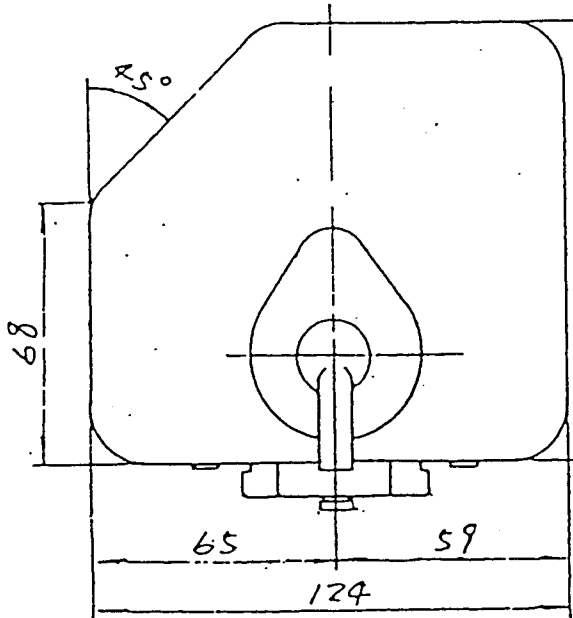
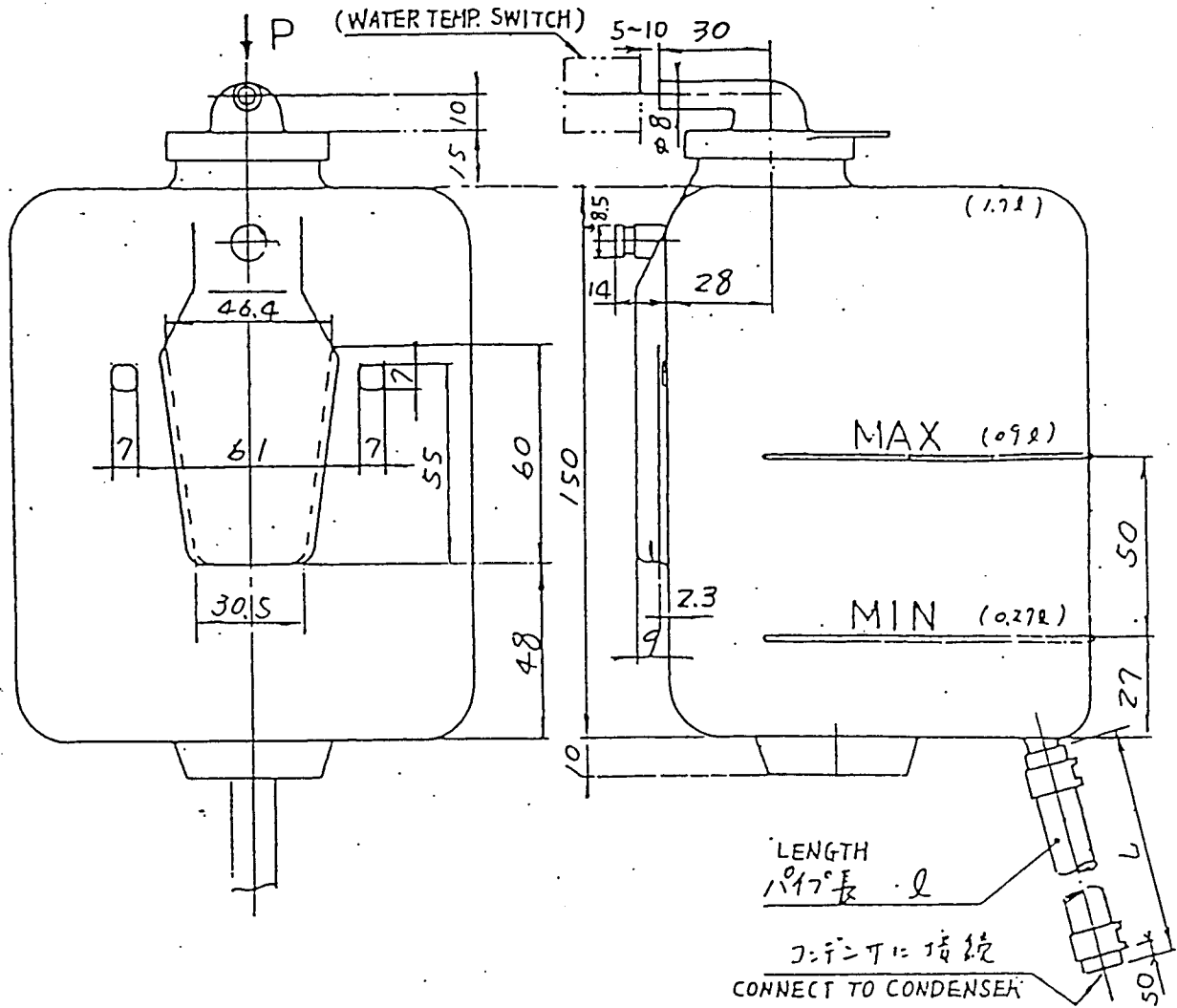


REF. FAN&SPACER	DIMENSION			PART No.			
	A	B	D	RADIATOR	HOSE, WATER (A)	HOSE, WATER (B)	CLAMP (3B)
K9674400 (4S-290)	352	18	305	MM130520	MM130522	MM130523	MF661019 ×4PC
MM403481 (5P-290)		19					
MM409351 (6S-310) MM403484 (FAN SPACER t-10)	358	22	325	MM130521	MM130522	MM130523	MF661019 ×4PC
MM403480 (5P-310)	352	19					
△ MD009015 (5S-320)	350	12	340	MM130524	MM130535	MM130536	
△△△ MM43087301 (7P-320)	366	25					
△ MM40543001 (6P-320)	373	21					

ラジエータ仕様 RADIATOR SPEC	
放射面積 AREA OF RADIATING SURFACE	6.61m <sup>2</sup>
開弁圧力 OPENING PRESSURE OF CAP	0.9kgf/cm <sup>2</sup>
乾燥重量 DRY WEIGHT	6.7kgf
水容量 VOLUME OF WATER	2.3ℓ
放射量 RADIATOR CAPACITY	21700kcal/h
耐振性 ALLOWABLE VIBRATION	MAX. 5G
塗装色 COLOR	BLACK

△ '86. 5.30    △ '97. 6. 2

APPR'D. BY T. ISHIGURO	CHECKED BY A. HAGITA	DATE '96. 10. 31 DRAWN BY (MSH) T. HIROSE	NAME L3 RADIATOR SYSTEM	DWG. NO. TD SLO-412D
---------------------------	-------------------------	---	-------------------------------	-------------------------



P VIEW  
視

MATERIAL  
材質

POLYPROPYLENE  
P17°C/L

PARTS No.	HOSE "L" mm	PARTS No.	HOSE "L" mm
MM315436	440		
MM317424	600		
MM317426	730		
MM317465	1000		
MM317467	1360		
MM407370	1500		

設計 31

承認 31

APPROD BY 31

CHECKED BY 41

DRAWN BY 41

DATE May-13-80

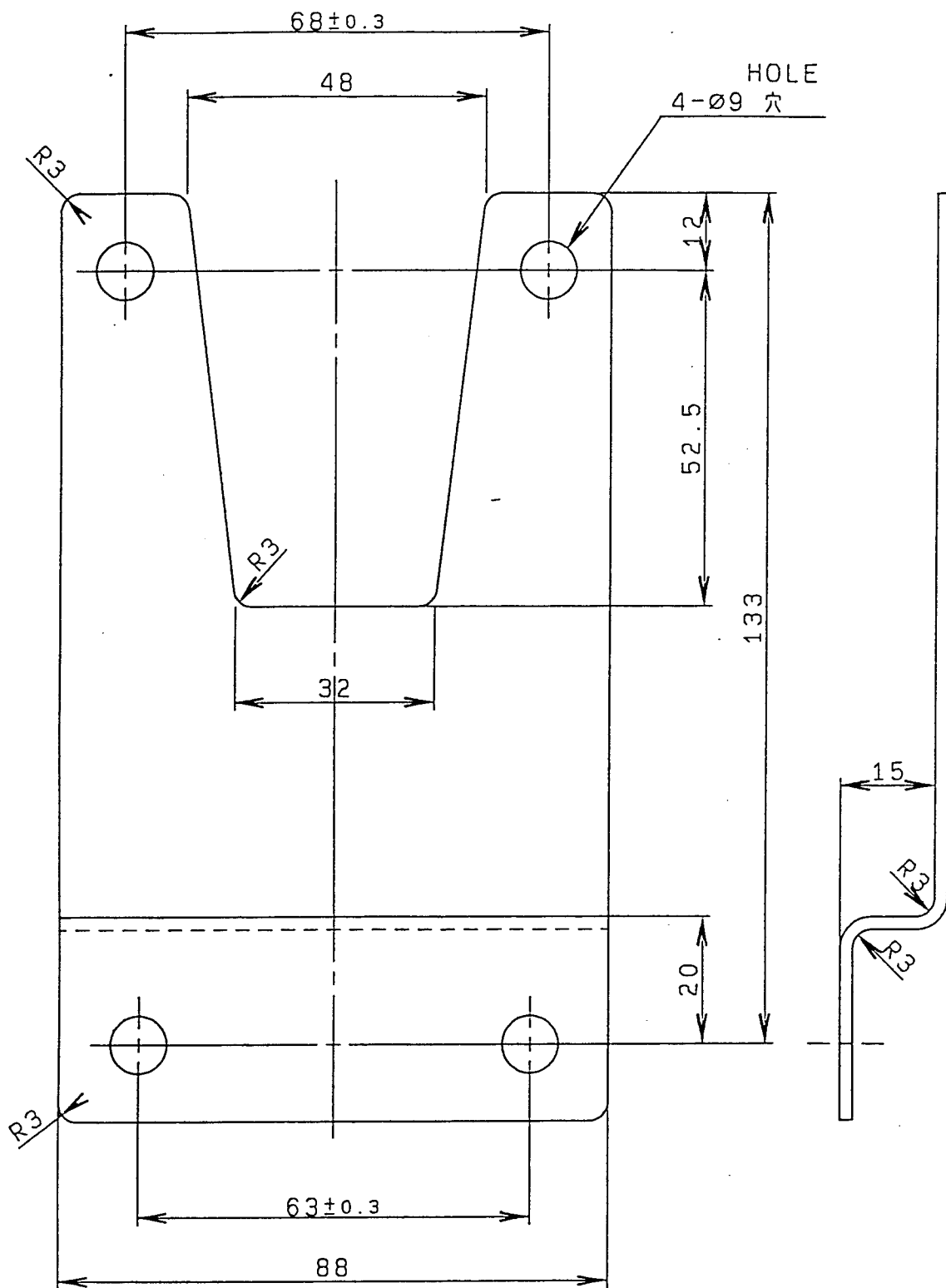
NAME RESERVOIR TANK ASSY

TDSD-4701 B

13-011 (1)

SCALE 1:1





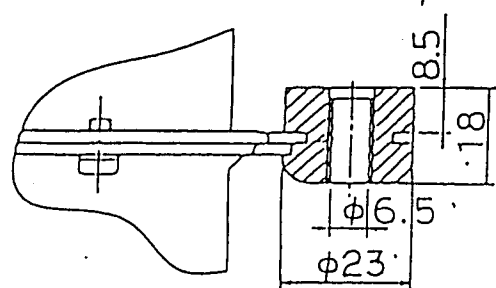
MATERIAL  
材料 SPCC t=2.0

部品番号 MM315421

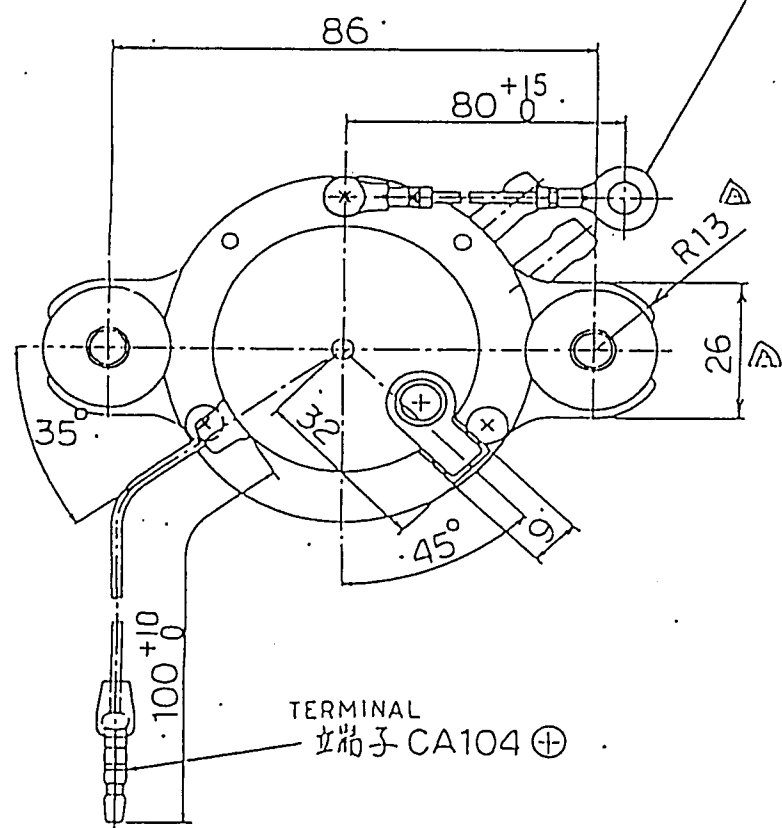
PART NO.

△ 97.4.11. 材料変更

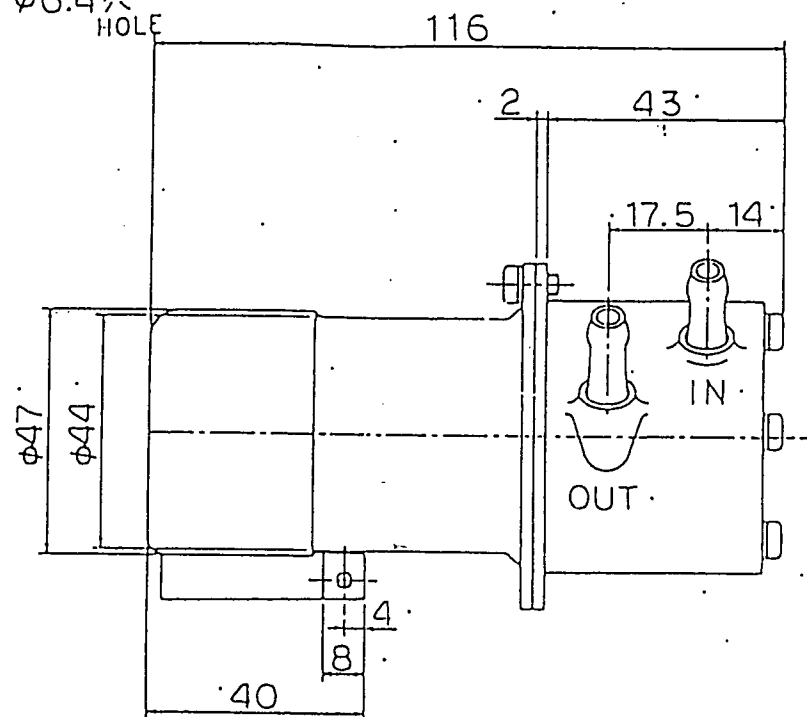
APPR'D. BY 坪田	CHECKED BY 萩峰 近	DATE '97. 4. 11	NAME	DWG. NO.
		DRAWN BY (MSH) 広瀬	RESERVOIR BRACKET	TD SKO-4171A



TERMINAL  
立端子 LA106 ⊖  
φ6.4穴  
HOLE

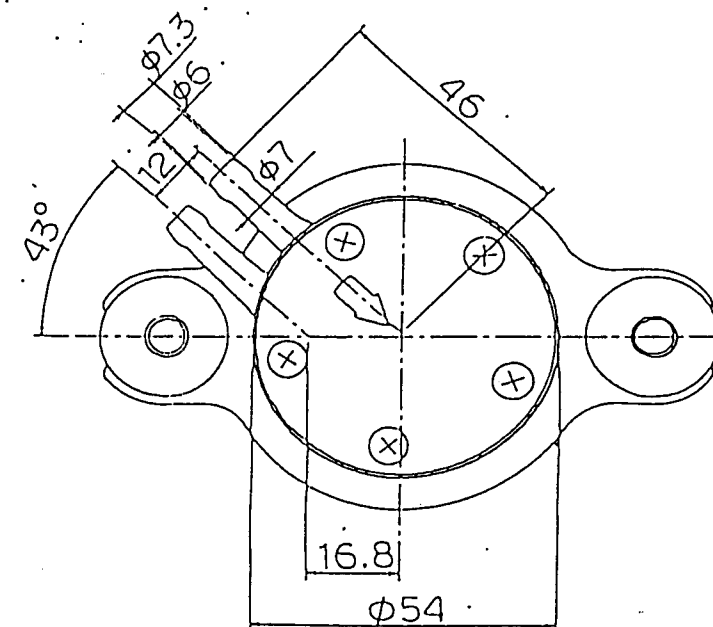


TERMINAL  
立端子 CA104 ⊕



⊕  
UPWARD

←  
取付方向  
SETTING DIRECTION



PART No.  
部品番号 30A60-00200  
RATED VOLTAGE  
定格電圧 DC12 V  
PUMP DELIVERY  
吐出量 300 CC/min以上  
(WITH φ1.7 NOZZLE)  
(φ1.7ノズル付時)

MAX. SUCTION PRESS. MIN. (DRY)  
最大吸上ヘッド 150mmHg以上(乾き時)  
WORKING TEMPERATURE RANGE  
使用温度範囲 -20~70°C  
WEIGHT  
重量 550gr  
ALLOWABLE VIBRATION  
許容振動の速度 MAX. 4G

APPR'D. BY 尹持	CHECKED BY 伴峰	DATE 90.6.21 DRAWN BY 山岸	NAME (噴霧器仕様) FUEL PUMP ASSY.	DWG. NO. TDSK4-4488A
------------------	------------------	--------------------------------	------------------------------------	-------------------------